

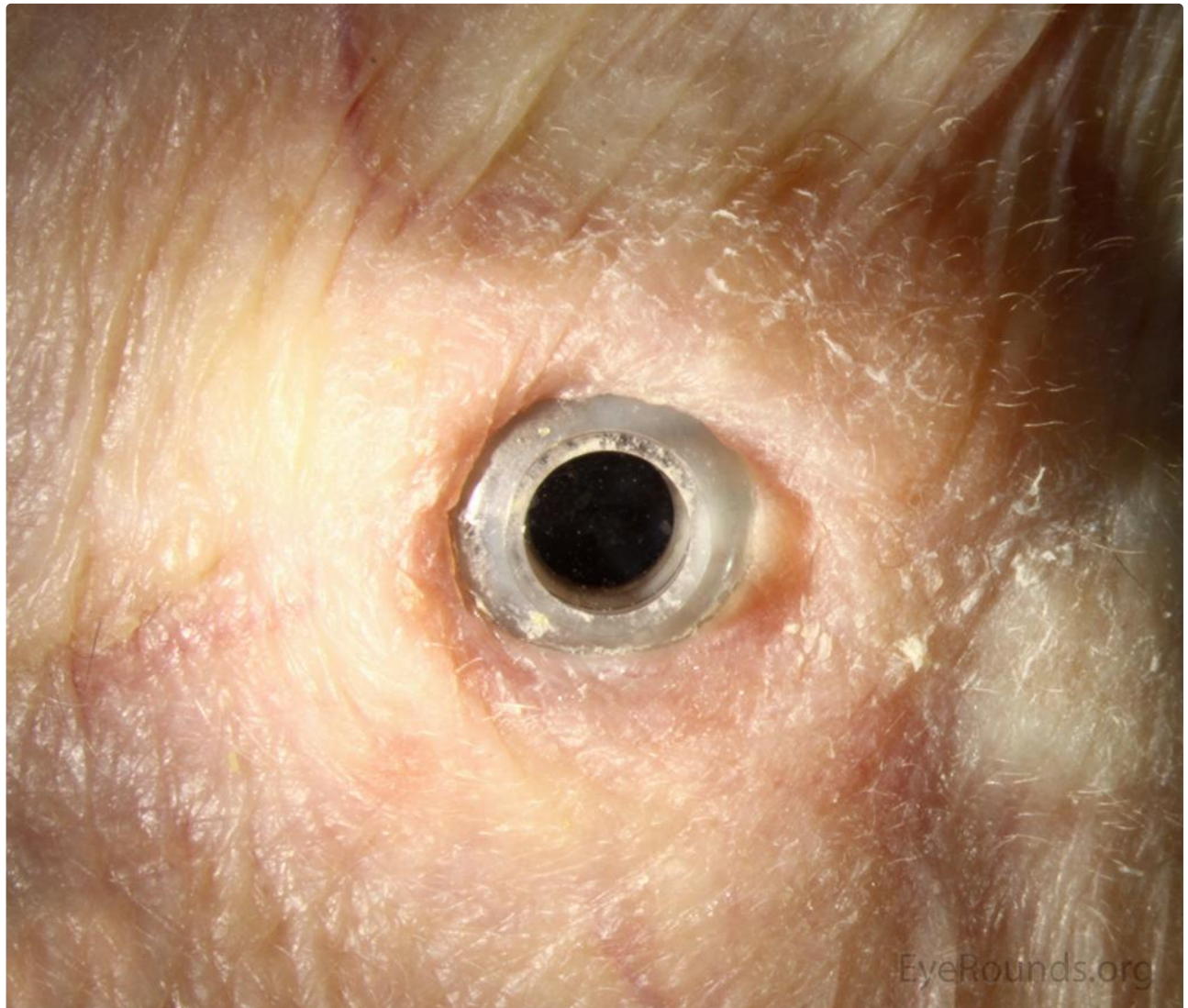
## Boston Type 2 Keratoprosthesis (KPro)

**Category(ies):** Cornea, External Disease

**Contributor:** [Jesse Vislisel, MD](#)

**Photographer:** Antoinette Venckus, CRA

The Boston Type 2 Keratoprosthesis (KPro) is an artificial device used to replace the cornea in the setting of diseases with severe, recurrent scarring in which other types of corneal transplants are not a viable option. A complete tarsorrhaphy is performed and the polymethylmethacrylate (PMMA) optic of the device projects through an opening created in the upper eyelid. The device in this photograph was placed in a patient with severe ocular cicatricial pemphigoid (OCP). [A surgical video demonstrating the placement of the Boston Type 2 KPro in a different patient with OCP can be seen.](#)



EyeRounds.org

 Enlarge

 Download

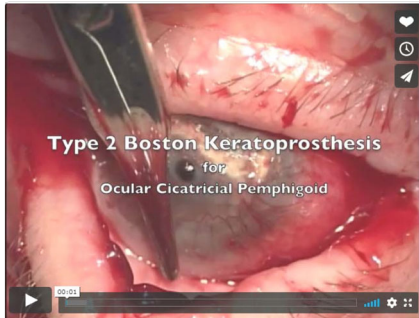
## Image Permissions:



Ophthalmic Atlas Images by [EyeRounds.org](http://EyeRounds.org), [The University of Iowa](http://The University of Iowa) are licensed under a [Creative Commons Attribution-NonCommercial-NoDerivs 3.0 Unported License](https://creativecommons.org/licenses/by-nc-nd/3.0/).



## Related Articles



[Surgical Video: Type 2 Boston Keratoprosthesis for Ocular Cicatricial Pemphigoid](#)

## Address

University of Iowa  
Roy J. and Lucille A. Carver College  
of Medicine  
Department of Ophthalmology and  
Visual Sciences  
200 Hawkins Drive  
Iowa City, IA 52242

[Support Us](#)

## Legal

Copyright © 2019 The University of  
Iowa. All Rights Reserved  
[Report an issue with this page](#)  
[Web Privacy Policy](#) |  
[Nondiscrimination Statement](#)

## Related Links

[Cataract Surgery for Greenhorns](#)  
[EyeTransillumination](#)  
[Gonioscopy.org](#)  
[Iowa Glaucoma Curriculum](#)  
[Iowa Wet Lab](#)  
[Patient Information](#)  
[Stone Rounds](#)  
[The Best Hits Bookshelf](#)

## EyeRounds Social Media

Follow



Receive notification of new cases,  
[sign up here](#)  
[Contact Us](#)  
[Submit a Suggestion](#)